

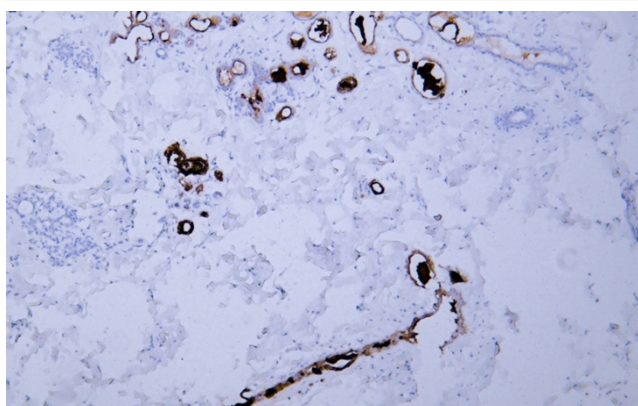


Gross cystic disease fluid protein-15 (GCDFP-15) (ABT-GCDFP15) mouse mAb

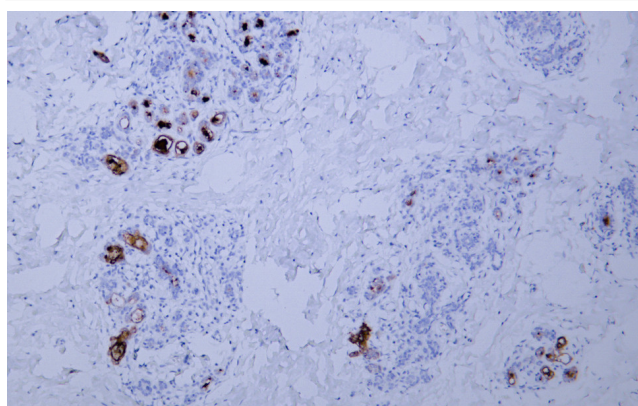
Catalog No	YP-Ab-15428
Isotype	IgG
Reactivity	Human
Applications	IHC;IF
Gene Name	PIP GCDFP15 GPII4
Protein Name	Gross cystic disease fluid protein-15 (GCDFP-15)
Immunogen	Synthesized peptide derived from human Gross cystic disease fluid protein-15 (GCDFP-15)
Specificity	This antibody detects endogenous levels of human Gross cystic disease fluid protein-15 (GCDFP-15). Heat-induced epitope retrieval (HIER) TRIS-EDTA of pH8.0 was highly recommended as antigen repair met
Formulation	Liquid in PBS containing 50% glycerol, 0.5% BSA and 0.02% sodium azide.
Source	Mouse, Monoclonal/IgG1, Kappa
Purification	The antibody was affinity-purified from mouse ascites by affinity-chromatography using specific immunogen.
Dilution	WB 500-2000 IHC-p 1:100-500. IF 1:50-200
Concentration	1 mg/ml
Purity	≥90%
Storage Stability	-20°C/1 year
Synonyms	
Observed Band	
Cell Pathway	Secreted.
Tissue Specificity	Expressed in pathological conditions of the mammary gland and in several exocrine tissues, such as the lacrimal, salivary, and sweat glands.
Function	induction:By prolactin and androgen; inhibited by estrogen.,similarity:Belongs to the PIP family.,subunit:Monomer. Interacts with AZGP1.,tissue specificity:Expressed in pathological conditions of the mammary gland and in several exocrine tissues, such as the lacrimal, salivary, and sweat glands.,
Background	induction:By prolactin and androgen; inhibited by estrogen.,similarity:Belongs to the PIP family.,subunit:Monomer. Interacts with AZGP1.,tissue specificity:Expressed in pathological conditions of the mammary gland and in several exocrine tissues, such as the lacrimal, salivary, and sweat glands.,
matters needing attention	Avoid repeated freezing and thawing!

Usage suggestions

This product can be used in immunological reaction related experiments. For more information, please consult technical personnel.

Products Images

Human breast tissue was stained with Anti-GCDFP-15 (ABT-GCDFP15) Antibody



Human breast tissue was stained with Anti-GCDFP-15 (ABT-GCDFP15) Antibody